

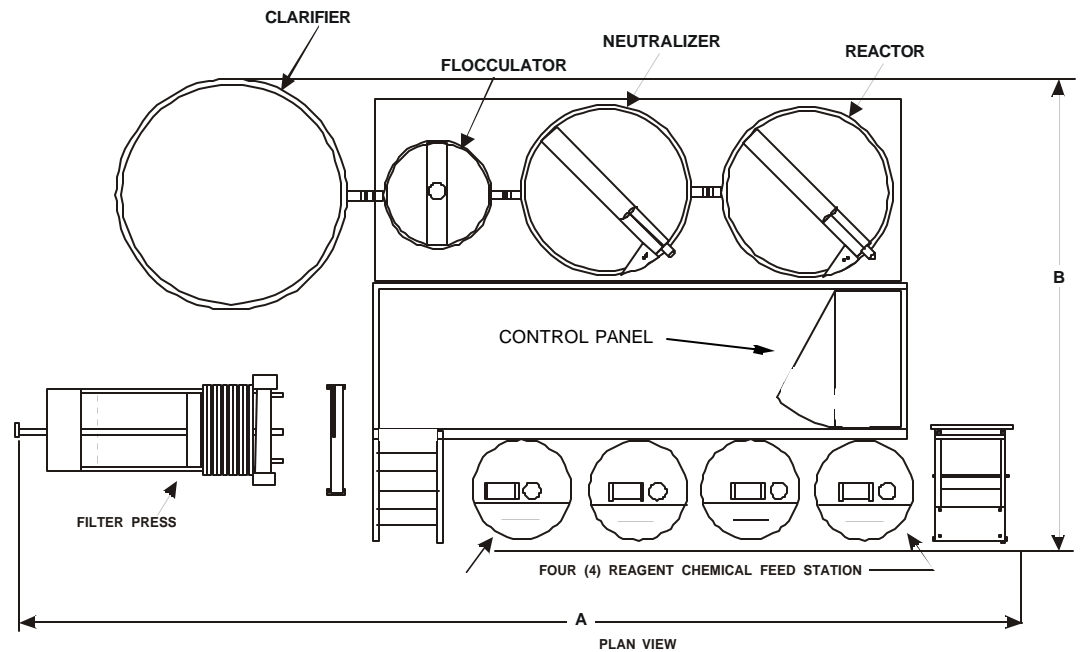
DMP
MODULE
SERIES

MODULE 2000-4000



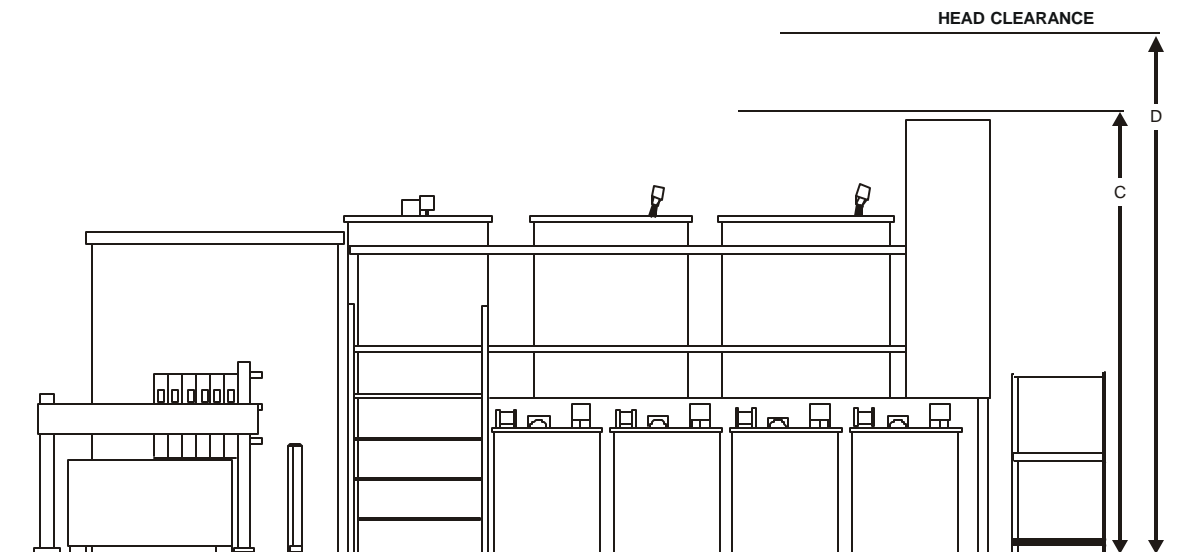
DMP
CORPORATION
INDUSTRIAL WATER TREATMENT

400 Bryant Blvd. | Rock Hill, SC USA 29732 | TOLL FREE: 800-845-3681 | Fax: 803-328-8399
www.dmpcorp.com



THE LAYOUT SHOWN HERE IS ONE EXAMPLE OF MANY POSSIBLE CONFIGURATIONS, AND THE MEASUREMENTS ARE APPROXIMATE. THIS DRAWING IS PRODUCED FOR MARKETING PURPOSES ONLY AND IS NOT INTENDED TO BE VIEW AS A FINAL ENGINEERING DRAWING.

	2000	3000	4000
A	21'-0"	24'-0"	25'-0"
B	13'-0"	13'-0"	14'-0"
C	9'-0"	9'-0"	9'-0"
D	10'-6"	10'-6"	10'-6"



**Typical Layout
Module 2000-4000**