

DMP  
MODULE  
SERIES

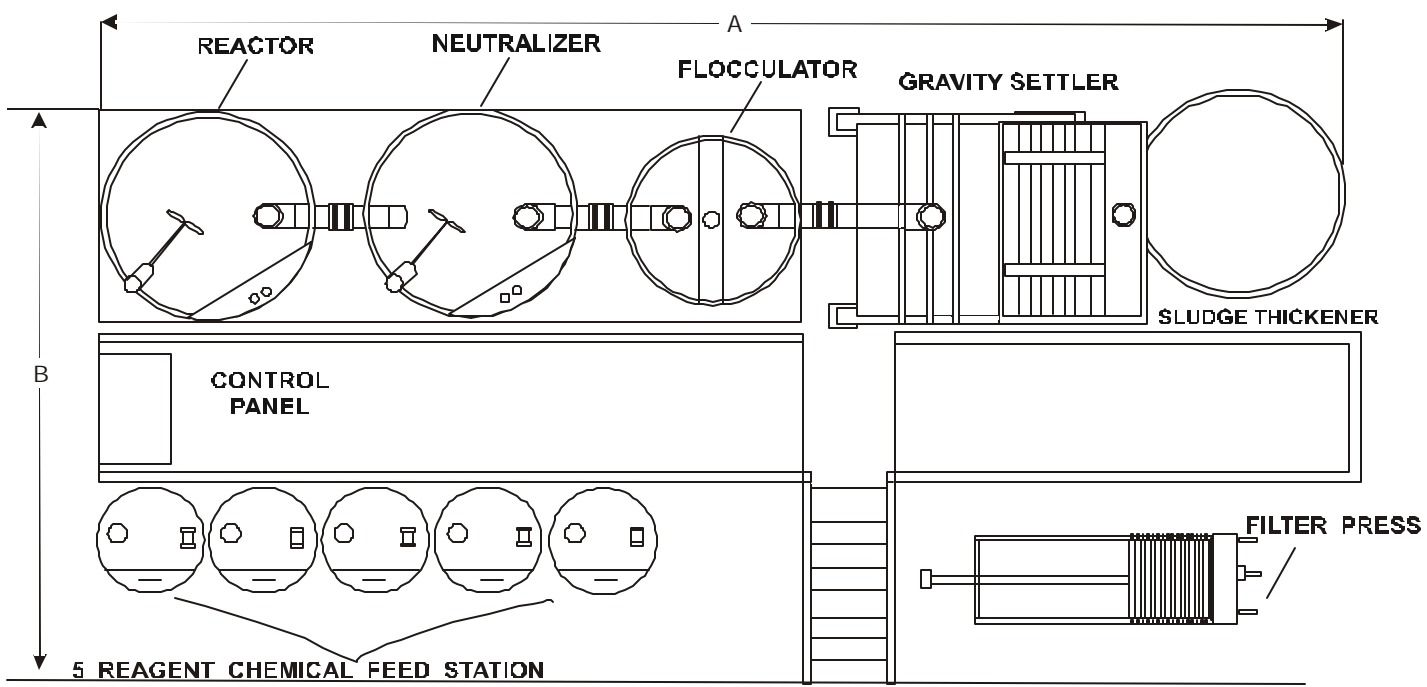
# MODULE 6000-20000



**DMP**  
**CORPORATION**  
INDUSTRIAL WATER TREATMENT

400 Bryant Blvd. | Rock Hill, SC USA 29732 | TOLL FREE: 800-845-3681 | Fax: 803-328-8399  
[www.dmpcorp.com](http://www.dmpcorp.com)

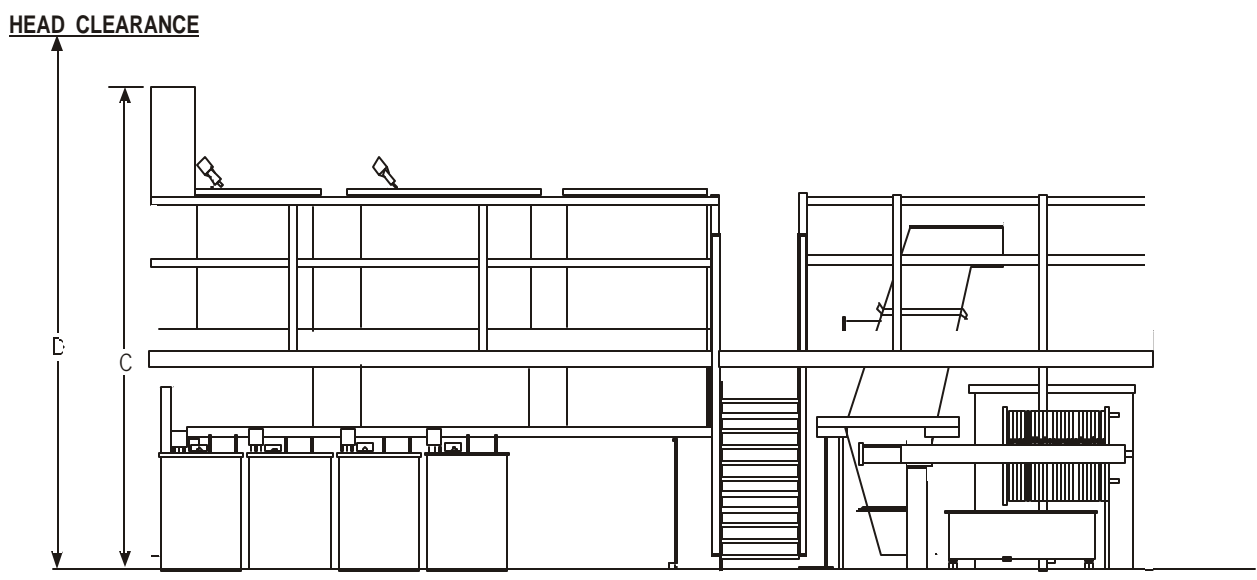
The lay-out shown here is one example of many possible configurations and the measurements are approximate. This drawing is produced for marketing purposes only and is not intended to be viewed as a final engineering drawing.



PLAN VIEW

	6000	8000
A	29'-0"	30'-0"
B	17'-0"	18'-6"
C	13'-0"	14'-0"
D	15'-0"	16'-6"

	10000	12000
A	32'-0"	34'-0"
B	18'-6"	20'-0"
C	14'-6"	15'-0"
D	15'-0"	16'-6"



FRONT ELEVATION

	16000	20000
A	44'-0"	50'-0"
B	21'-0"	22'-0"
C	16'-0"	17'-0"
D	17'-0"	18'-0"



**Typical Layout  
Module 6000-20000**